

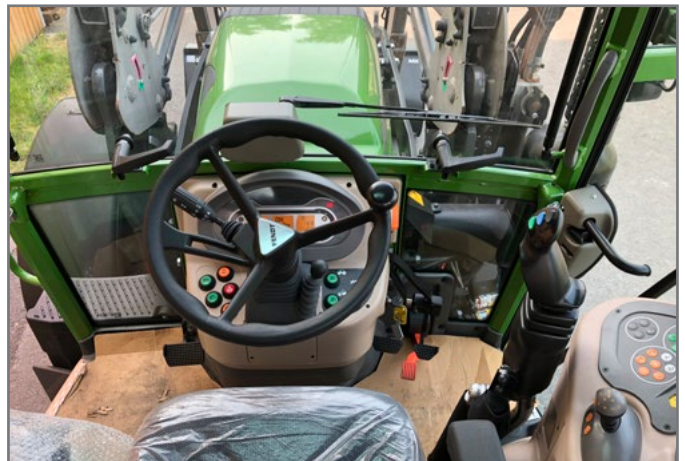


FENDT - 200 VARIO S3*

STANDARD 210



MX equipment : T406 on 210



T406 - T408 - U305 - U306 - U307 - U308 - U405 - A106 - U406 - U406P - U407 - U408 - U408P - T406P



e-Pilot - Original control valve - ECOPILOT - PROPILOT - FLEXPILLOT

MXCONFIG



*Equipped models of this range : **STANDARD 207 / 208 / 209 / 210 / 211**

Check the recommendations and configure all MX equipments to your tractor with the application **MXConfig**.

MX solution for FENDT

